

Vehicle Emission Control Information (VECI)

VECI Decal

Each vehicle has a VECI decal containing emission control information that applies specifically to the vehicle and engine. The specifications on the decal are critical to repairing the emissions systems.



N0073036

Typical VECI Decal

VECI Decal Location

Typical location of the decal is on the underside of the hood or on the radiator support sight shield.

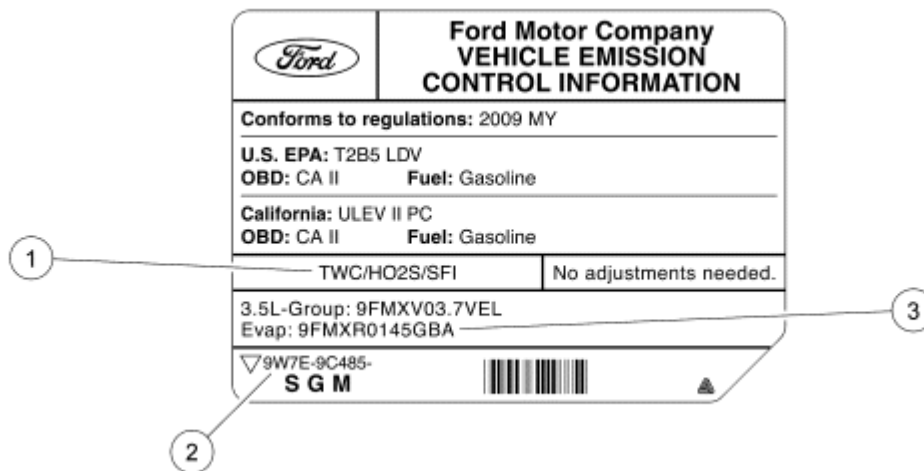
Engine/Evaporative Emission (EVAP) System Information

Manufacturers must use a standardized system for identifying their individual engine families. The system described below was developed by the Environmental Protection Agency (EPA) in 1991 to meet new regulatory requirements for 1994 and later model years.

The engine family group and evaporative family name consists of 12 characters each.

Both the engine family group and the evaporative family name are listed in the box on the emission decal as indicated in the area marked as engine evaporative family information. The first line contains engine size and the 12-character engine family group. The second line contains the 12-character evaporative family name information. Both the engine family group and the evaporative family name are specific to the vehicle. Please refer to the Engine Family Group and the Evaporative Family Name worksheet for decoding information.

Typical VECI Decal



N0073037

Item	Number	Description
1	—	Exhaust Emission Control Systems
2	—	Label Part Number
3	—	Engine Evaporative Family Information

ENGINE FAMILY GROUP WORK SHEET

Char	Year		Manufacturer			Type		Displacement				Wild Card		
	1		2	3	4	5		6	7	8	9	10	11	12
	Code	Year				Code	Description							
	1	2001	F	M	X	N	Nonstandard Family	0	1 to 9	.	0 to 9	Alpha/Numeric		
	2	2002				V	Light Duty Vehicle							
	3	2003				T	Light Duty Truck							
	4	2004				C	Motorcycle							
	5	2005				A	Calif Medium Duty Truck							
	6	2006				H	Heavy Duty Engine							
	7	2007				S	Small Nonroad							
	8	2008				L	Large Nonroad							
	9	2009				M	Marine							
Family Name			F	M	X			0	1 to 9	.	0 to 9			

N0009582

Evaporative Family Name Work Sheet

Char	Year		Manufacturer			Type		Canister Working Capacity				Wild Card		
	1		2	3	4	5		6	7	8	9	10	11	12
	Code	Year				Code	Description							
	1	2001	F	M	X	E	Evaporative (Use for Existing/ Enhanced)	a	a	a	a	alpha/numeric		
	2	2002												
	3	2003				R	Evaporative/ Refueling (Use for ORVR)							
	4	2004												
	5	2005												
	6	2006												
	7	2007												
	8	2008												
	9	2009												
Family Name			F	M	X									

a Total Grams in all canisters (Use 0 for each character not used for capacity starting with character 6)